



## Industrial Hemp Farms

Denver, CO 80216  
 jack@industrialhempfarms.com  
 (913) 991-8022

## Sample 280-062521-133

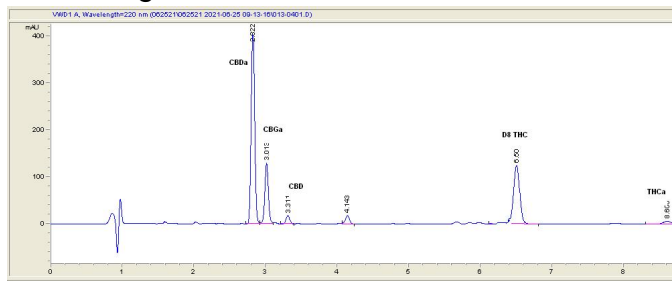
Fortified Elektra  
 Batch/Lot # 0522IHF05  
 Sample Submitted: 06-25-2021; Report Date: 06-26-2021

## Fortified Elektra

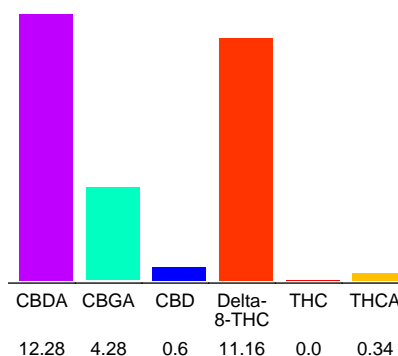
Plant Material: Flower

Batch/Lot # 0522IHF05

### Chromatogram



### Cannabinoid Profile



### Cannabinoid Profile by HPLC

**0.30%**  
 Calculated THC Yield

**11.37%**  
 Calculated CBD Yield

**28.66%**  
 Total Cannabinoids

Cannabinoid	% wt	mg/g
CBDA	12.28	122.8
CBGA	4.28	42.8
CBD	0.6	6.0
Delta-8-THC	11.16	111.6
THC	0.0	0.0
THCA	0.34	3.4
<b>Total Cannabinoids</b>	<b>28.66</b>	<b>286.6</b>
<b>Calculated THC Yield</b>	<b>0.30</b>	<b>2.98</b>
<b>Calculated CBD Yield</b>	<b>11.37</b>	<b>113.70</b>

Calculated Maximum THC Yield =  $THC + 0.877 * THCA$   
 Calculated Maximum CBD Yield =  $CBD + 0.877 * CBDA$

### Marin Analytics, LLC

250 Bel Marin Keys Blvd, Suite D4  
 Novato, CA 94949

415-936-6477 / sarabiancalana1@gmail.com

**Sara Biancalana**  
 Chief Scientist

This sample has been tested by Marin Analytics, LLC using valid testing methodologies and a quality system. Values reported relate only to the sample tested. Marin Analytics, LLC makes no claims as to the efficacy, safety or other risks associated with any detected or non-detected levels of any compounds reported herein. This Certificate shall not be reproduced except in full, without the written approval of Marin Analytics, LLC.